



GMT MONTHLY MEMBERSHIP PROGRESS REPORT

Results as of: 1/31/2020

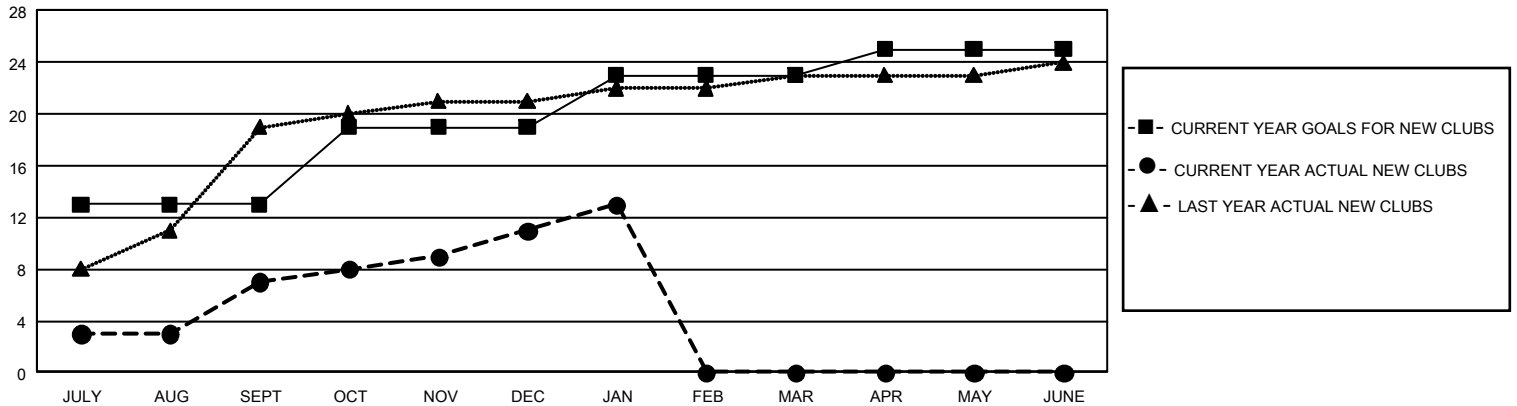
GMT Constitutional Area 6, Group O

GMT: OPEN

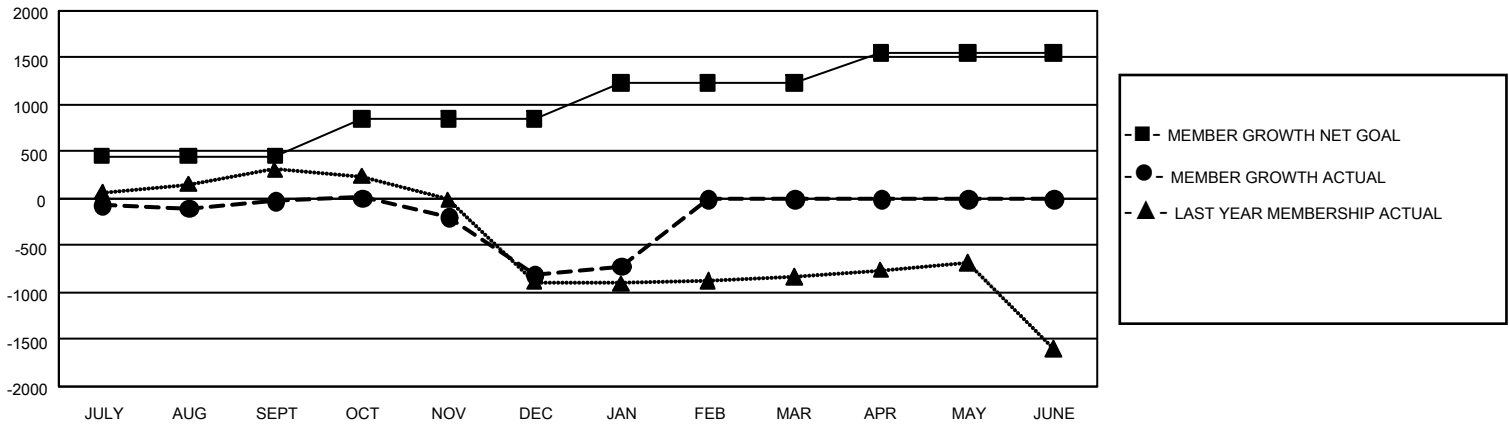
REPORT DOES NOT INCLUDE CLUBS IN UNDISTRICTED AREAS.

Clubs				Members			
RESULTS FOR 2019-2020				RESULTS FOR 2019-2020			
QUARTER	NEW CLUB GOAL	NEW CLUBS	DROPPED CLUBS	QUARTER	MEMBER GROWTH NET GOAL	MEMBER GROWTH ACTUAL	DROPPED MEMBERS ACTUAL (including transfers)
JULY/AUG/SEPT	39	7	0	JULY/AUG/SEPT	1,350	461	404
OCT/NOV/DEC	18	4	17	OCT/NOV/DEC	1,200	396	1,097
JAN/FEB/MAR	12	2	3	JAN/FEB/MAR	1,140	311	189
APR/MAY/JUNE	6	0	0	APR/MAY/JUNE	960	0	0

GOALS AND ACTUAL NEW CLUBS CUMULATIVE



GOALS AND ACTUAL MEMBERS CUMULATIVE



DROPPED CLUBS: 20	149 CLUBS OF 377 ADDED 1 OR MORE NEW MEMBERS	<u>GENDER DISTRIBUTION</u> MALE 10,325 (65.51%) FEMALE 5,435 (34.49%)
<u>DROPPED MEMBERS</u> DECEASED 12 CLUB CANCELLED 647 OTHER 1,031 <hr/> TOTAL 1,690	CLICK HERE FOR CUMULATIVE MEMBERSHIP DATA	TOTAL FAMILY UNIT MEMBERS 9,647 FAMILY MEMBERS PAYING HALF DUES 5,439